

Somerville House 50A Bath Road

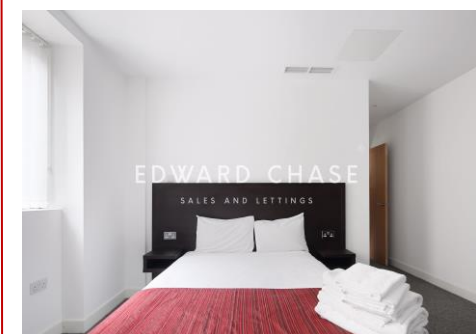
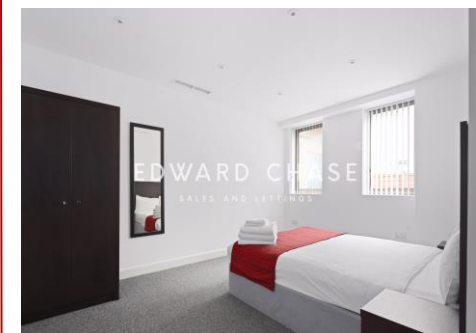
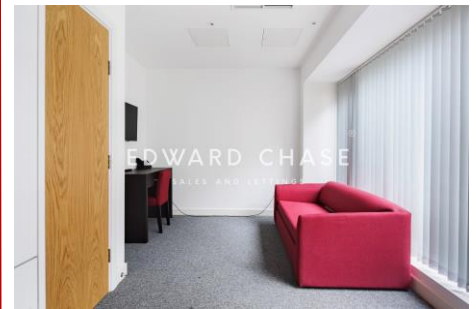
Edward Chase is delighted to present to the residential lettings market this amazing array of Studio's, 1 and 2 bedroom luxury apartments. These apartments are in a prime location and are available for short to long term lets. These apartments would be an ideal option for professionals, sharers or families searching for size, comfort, and convenience. Rents range from £999 for studio apartments. From £1099 for 1-bedroom apartments From £1349 for 2-bedroom apartments These apartments have several key features: - Double glazed windows - Concierge service - Spacious open plan kitchens - Tiled bathrooms - Fully furnished to high standard - All electric with no gas - Car parking available at additional cost - Town center location - Easy transportation links - Available on short to long term contracts - Brand new build Additional charges: 1. Heating & Air Conditioning charges are charged at a fixed rate of £50 per month. 2. Car park options are available for

- Luxury Accommodation Brand New Build On Short to Long Lets
- Selection Of Studios, 1 Bedroom & 2 Bedroom Apartments
- Fully Tiled Bathroom, Electric Only Apartments
- Apartment Comes Fully Furnished In An Ideal Location
- Property Has Parking Available At Additional Cost
- Concierge Service Available & Elevator System

Monthly Rental Of £1,049

Edward Chase is delighted to present to the residential lettings market this amazing array of Studio's, 1 and 2 bedroom luxury apartments. These apartments are in a prime location and are available for short to long term lets. These apartments would be an ideal option for professionals, sharers or families searching for size, comfort, and convenience. Rents range from £999 for studio apartments. From £1099 for 1-bedroom apartments From £1349 for 2-bedroom apartments These apartments have several key features: - Double glazed windows - Concierge service - Spacious open plan kitchens - Tiled bathrooms - Fully furnished to high standard - All electric with no gas - Car parking available at additional cost - Town center location - Easy transportation links - Available on short to long term contracts - Brand new build Additional charges: 1. Heating & Air Conditioning charges are charged at a fixed rate of £50 per month. 2. Car park options are available for allocated bays at £50 per month. 3. Internet is charged at £40

per month. 4. Tenants are liable for council tax, electric and water charges. Please contact Edward Chase today to arrange a viewing. Lettings Edward Chase estate agents offer a bespoke, professional, ARLA accredited Lettings & Management service. Edward Chase has client money protection (CMP) in place through the PropertyMark, scheme reference C0129032. If you would like a free property appraisal to gauge the rental potential of your property or you are considering a buy to let purchase, please feel free to contact Sukhbir Basra, Branch Manager to arrange an appointment. Edward Chase estate agents specialize in Ilford, Redbridge, Seven Kings, Goodmayes, Chadwell Heath, Newbury Park, Barkingside, Chadwell Heath, Barking, Canary Wharf, Romford, Dagenham, Newham, Royal Wharf and the surrounding East London vicinity.



MONEY LAUNDERING REGULATIONS 2003

Intending purchasers will be asked to produce identification and proof of financial status when an offer is received. We would ask for your co-operation in order that there will be no delay in agreeing the sale.